

ABC

ADVANCED BUILDING CONSTRUCTION

Collaborative



ADVANCED BUILDING CONSTRUCTION FOR ENVELOPE RETROFITS

Need and Opportunity for ABC Retrofits

Lucas Toffoli | RMI

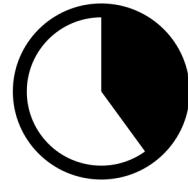
27 October 2022

PhiusCon | Chicago

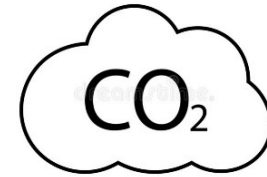
US Existing Building Stock



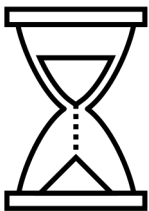
125+
million buildings
across the US



40%
of total U.S. energy use



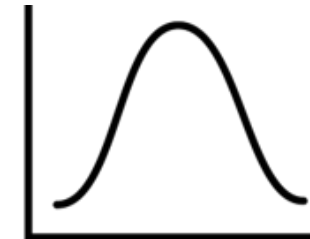
35%
of carbon emissions



50%
of U.S. buildings are
>40 years old




75%
of electricity




75%
of peak demand

EIA Annual Energy Outlook 2020; EIA CBECS 2012 and RECS 2015



Our goal: to decarbonize the US building stock before 2050 while improving resilience, affordability, and equity.

kolderal/Getty Images



Our hypothesis: by modernizing the construction industry and using more holistic definitions of quality and value, we can accelerate the pace at which decarbonization strategies are adopted by the mainstream buildings sector.

Mariko Reed / Onion Flats

Our approach:

Advanced Building Construction (ABC)

**ABC refers to retrofit (and new construction)
solutions that combine:**

**Energy-efficient
building decarbonization**

+

**Scalable, streamlined
industrialized construction approaches**

Deep energy efficiency has **substantial co-benefits**.



Reduced **maintenance**



Increased thermal and acoustic **comfort**



Improved indoor **air quality** and **health outcomes**



Resilience, including passive survivability



Reduced emissions for **climate and compliance**



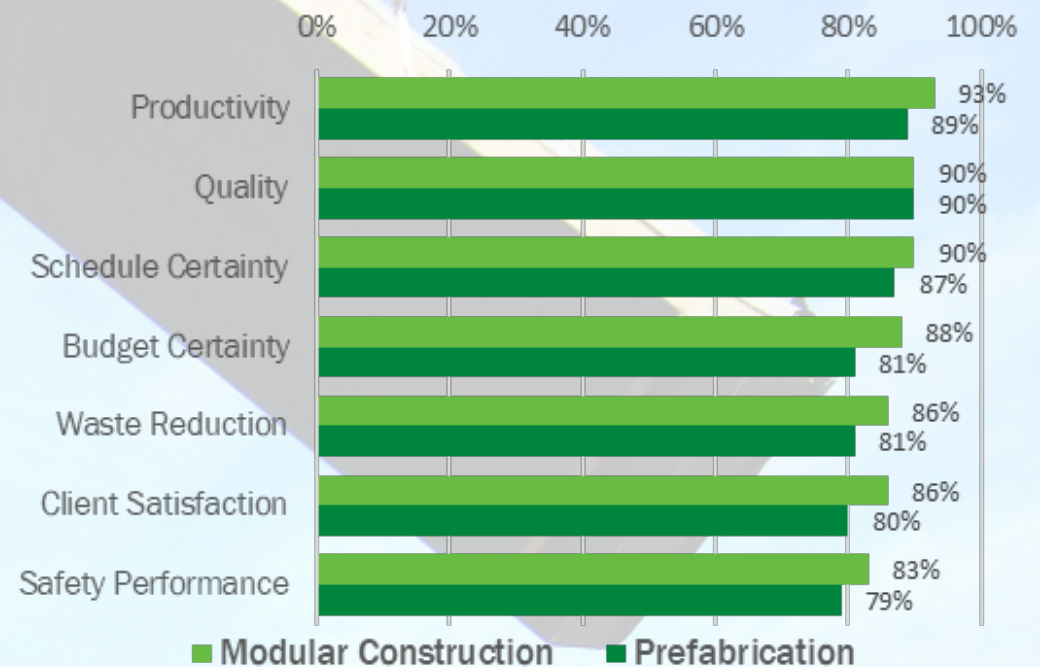
Electrical **grid stability**

Industrialized construction (IC) can help rapidly deploy energy-efficient, low-carbon retrofits at scale.

- Only a small percentage of US construction uses industrialized approaches.
- Yet a latent zero-carbon retrofit market could be unlocked using IC methods, which can enable **higher performance, faster deployment, less disruption, reduced schedule risk, precise material use and waste reduction, enhanced QC, technology integration, and workforce benefits.**

Collaboration is critical to achieve this!

Survey of AEC stakeholders: improvements in various categories with IC



Dodge 2020

The status quo is failing us— transformation is needed to address retrofits

US annual retrofits fall far short

- Only ~2% of commercial building space and <1% percent of homes undergo energy improvements each year
- Improvements are typically shallow, rarely surpassing 30% energy savings
- Comprehensive upgrades don't appeal to consumers: too costly compared to perceived value, slow, disruptive, and inconsistent



2030 objectives

- 3M+ net-zero carbon retrofits per year
- ABC is used in at least 25% of overall construction activity
- Innovative private sector business models and public sector support unlock the market

The ABC Collaborative's **core activities** foster, inform, and **accelerate an ABC ecosystem**.

*Transacting
Activities*



**Market
Scaling Support**

*Empowering
Activities*



**Workforce
Development**



**Innovation
Scaling**

*Foundational
Activities*



Convening



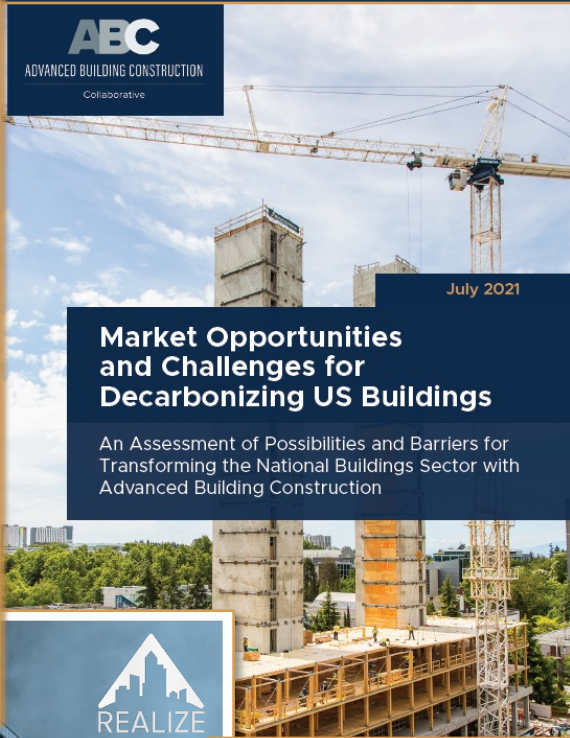
**Thought Leadership
and Education**



COMING SOON!

RMI / Self Help Enterprises

ABC Industry Guidance Report: Residential



Market Opportunities and Challenges for Decarbonizing US Buildings

An Assessment of Possibilities and Barriers for Transforming the National Buildings Sector with Advanced Building Construction



Prefabricated Zero Energy Retrofit Technologies

A Market Assessment
2020



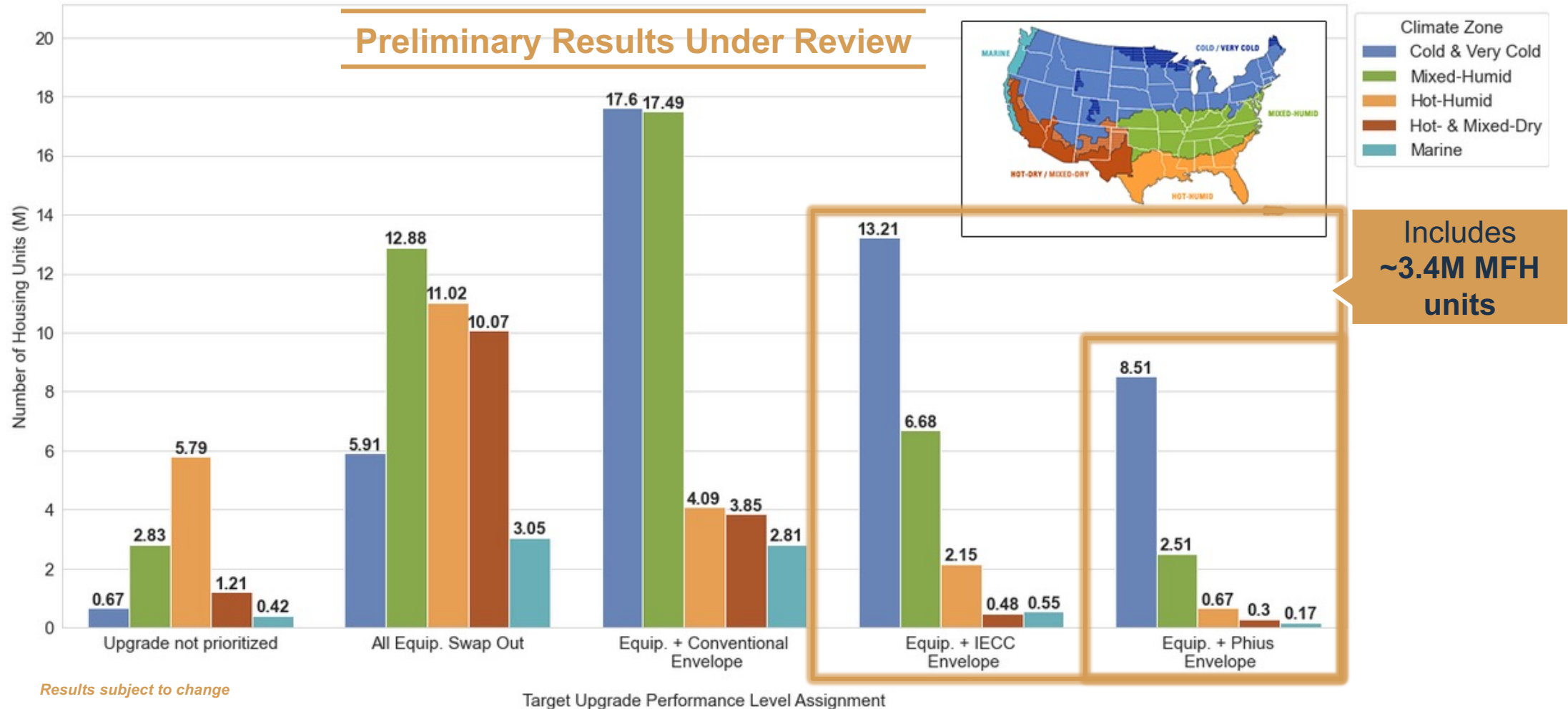
U.S. Building Stock Characterization Study
A National Typology for Decarbonizing U.S. Buildings
Part 1: Residential Buildings

Thought leadership helps guide industry actors in the nascent ABC market.

Guidance for ABC stakeholders includes:

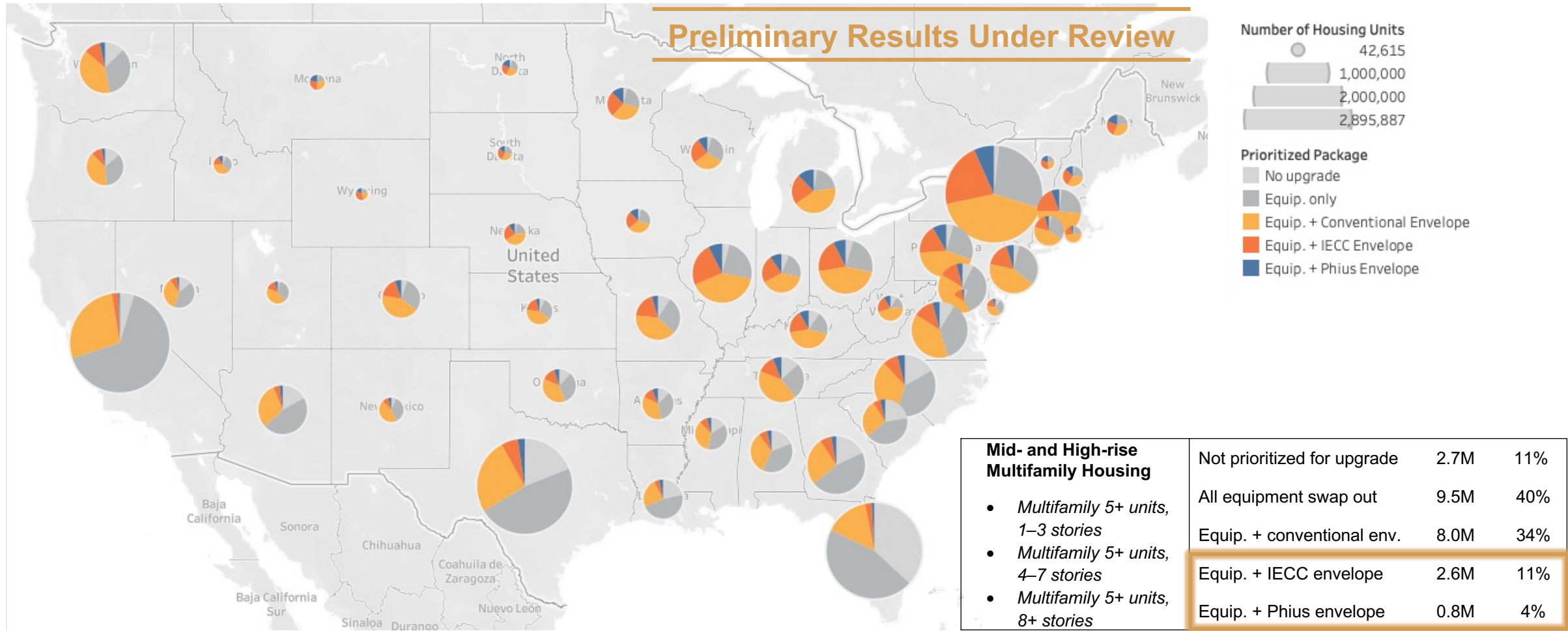
- ABC Market Insights Report
- Building Stock Characterization Studies (NREL)
- Industry Guidance Report – residential report expected this fall
- Topical briefs and Working Group outputs
- Topic/stakeholder-specific knowledge shares and educational sessions
- Insights on ABC opportunities

Industry Guidance Report: many buildings will need “deeper” retrofits!



Industry Guidance Report: Northeast and Midwest need many deep MFH retrofits

Preliminary Results Under Review

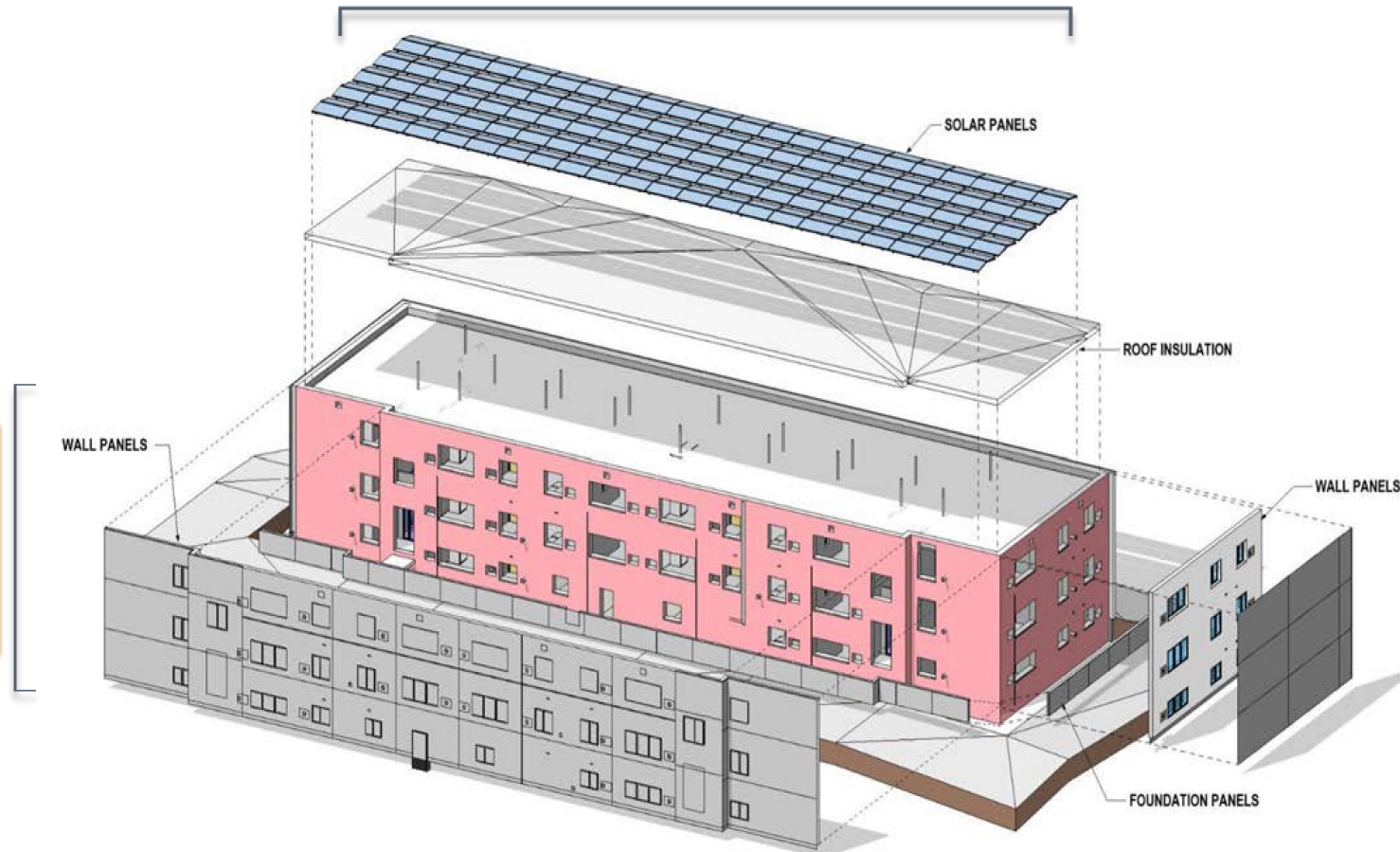


Results subject to change

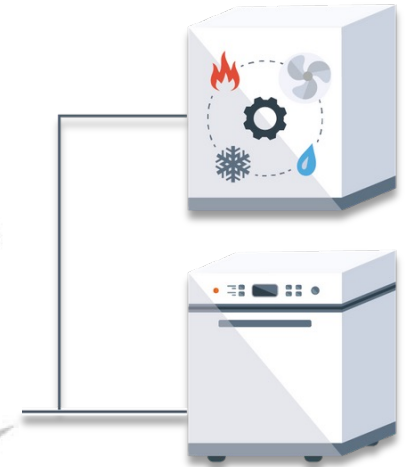
Standardized packages can enable scale.

High-performance roof system
including integrated solar

Integrated mechanicals
including HVAC and
DHW, with controls and
option for smart inverter
and energy storage

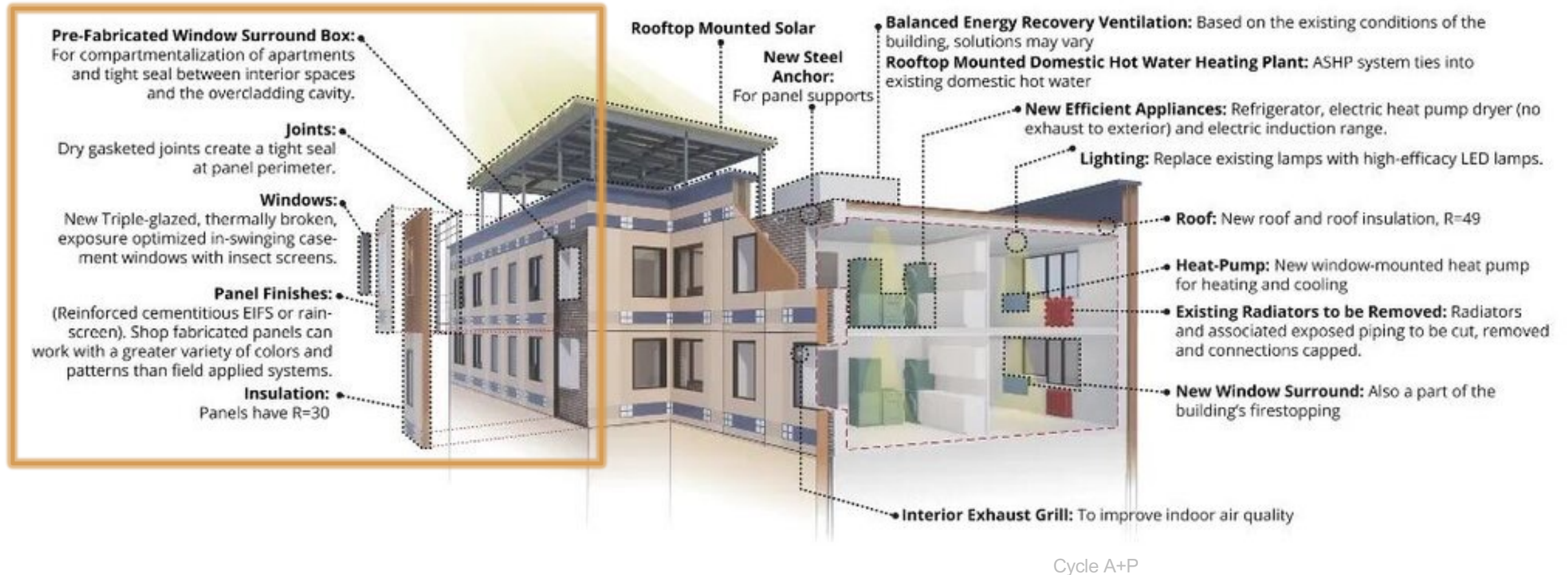


Prefabricated wall panels including high-performance windows and doors

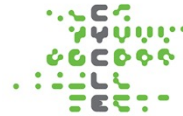
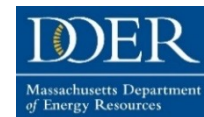
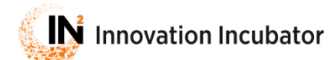
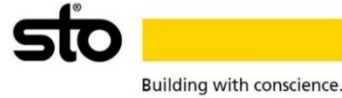


All-electric equipment

Standardized packages can enable scale.



Collaborative Network*



Sheppard Group, LLC



alpha group



*Partial list; see website for current list of Collaborators and Supporters.

Includes ABC Collaborative team members, funders, MOU signers, Letter of Support writers, and other significant collaborators

ABC

ADVANCED BUILDING CONSTRUCTION

Collaborative

Thank You!

advancedbuildingconstruction.org/contact-us